



BORA



In 2018, the University of Bonn founded the **Bonn Research Alliance (BORA)** as an initiative to connect with local non-university research institutions and globally recognized think tanks to jointly address institutional and scientific challenges. BORA is also a key measure in the successful Excellence Strategy.

Cooperation

BORA currently consists of 12 scientific member institutions. These encompass three institutes of the Fraunhofer and four of the Max Planck Society, one Helmholtz and one Leibniz institute, as well as three globally ranked think tanks.

At the basis for cooperation are numerous existing interactions within **clusters of excellence, collaborative research centers, research groups** or **graduate schools**, joint activities in **teaching**, the involvement of **junior researchers**, joint use and development of **infrastructure** as well as **cooperation in professoral appointments, dual career** topics and much more.

Common goals

BORA members jointly strive to realize an excellent, internationally thriving scientific landscape on the Rhine with a global focus and outlook. Main fields of collaboration concern **(1) fostering excellent young researchers**, **(2) recruiting and retaining the best minds** and **(3) a common approach to research infrastructures**.

BORA.program

The staff unit therefore deals with cross-institutional concerns as well as with comprehensive thematic initiatives that are relevant for the entire Bonn science scape. Our program is dedicated to:

1 BORA.connect

We bring together colleagues from non-university research institutions and the University of Bonn on a regular basis and upon request.

2 BORA.young researchers

We support young researchers in navigating Bonn's scientific landscape, networking across institutional boundaries and getting into collegial exchanges.

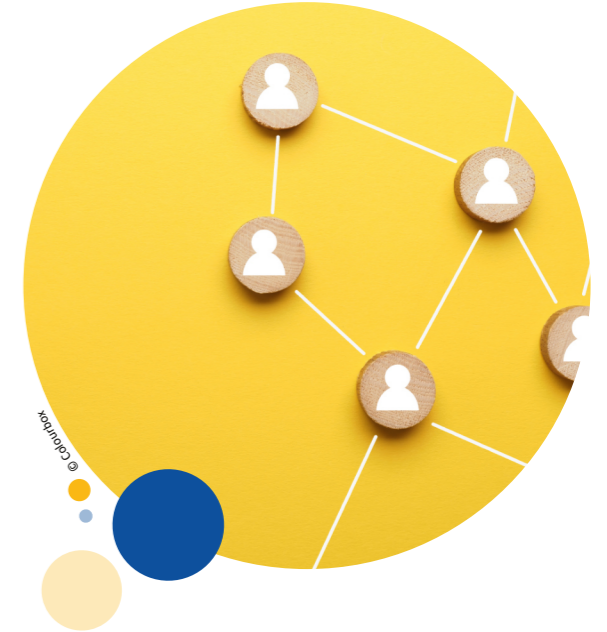
3 BORA.international

We work with BORA members to create a common welcome culture in Bonn through specific joint offers and a collaborative mindset.

Exemplary activities

BORA Leadership Forum:

The heads of BORA member institutions meet regularly to discuss views on current developments and key issues in the scientific landscape and the region.



Meet & Greets:

We bring together colleagues from similar areas of work. The exchanges focus on core institutional development topics such as diversity and international affairs.

Emerging Initiatives:

We support emerging initiatives that jointly advance relevant topics for Bonn's science scape. This includes, for example, collegial scientific exchange, thematic cooperation platforms and working groups that bring together expertise across institutions.



© Vohler-Lammert / University of Bonn

Staff Unit for the Bonn Research Alliance (BORA)

Dr. Sandra Gilgan

Head of Unit

s.gilgan@uni-bonn.de

+49 (0)228 73 60594



Una Kliemann

Communications Manager

u.kliemann@uni-bonn.de

+49 (0)228 73 60615

